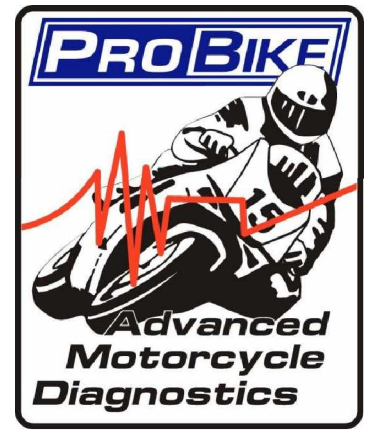
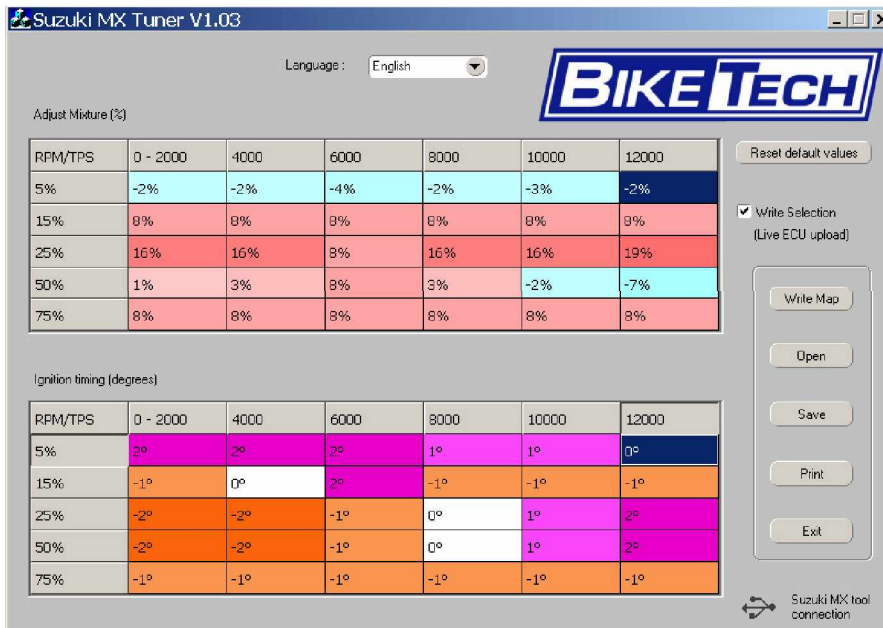


BikeTech Suzuki MX Fuel Injection & Ignition Adjuster

PC Based - USB Interface & Windows Software

For Fuel Injected Suzuki RM-Z450 K8



Wide tuning range:

BikeTech Suzuki MX has a wide range of adjustment - enough to cure lean and rich misfire and to alter engine performance to suit riders, tracks and track conditions. By not degrading the original ignition accuracy, **BikeTech** allows the Suzuki RM-Z450 to produce the best power possible.

Save and recall settings FAST:

BikeTech Suzuki MX takes control of the vast amounts of permutations of adjustment available on the RM-Z450 ECU. Imagine trying to remember and reset these variables manually! Every race. Each rider. **BikeTech Suzuki MX** takes the pain out of organising the tuning for one bike or a whole race team. This is the way it should be. Fast, easy and efficient.

FEATURES

- No add-on boxes; no wiring to alter; no permanent connections to make
- No bike dismantling required - simply connect to the bike's ECU via the connector
- No possibility of adding potential wiring problems
- No ECU mapping conflicts or additional processors trying to "trick" the original ECU
- All settings can be saved to a tuning file; tested and uploaded again as required
- The fastest, easiest tuning you will ever have done!
- Essential tool for anyone racing these bikes
- Easy to install and easy to use software
- Compatible with all versions of Windows with USB ports (Inc Windows 95 OSR2, 98, Millennium, Windows 2000, XP Pro; XP Home)
- Complete with USB cable and case

Software Features at a glance:

- Fuel Injection adjustment: -20% to +20%
- Ignition Timing adjustment: -2° to +2°
- All ECU settings at 5 throttle positions vs 6 RPM ranges
- Full database for riders, bikes and racetracks
- Recall individual settings by track, track conditions, weather
- Adjust individual parameters or upload new settings file
- Print each settings file with bike & rider details
- Intuitive coloured adjustment table - blue=lean; red=rich

Saved files include the following data:

- All ECU settings for 5 throttle positions vs 6 RPM ranges
- Bike VIN / Chassis No.
- Bike Race Number
- Rider
- Race course Date
- Track conditions
- Weather conditions
- Large notes field to record all information



Only £350.00 ex VAT